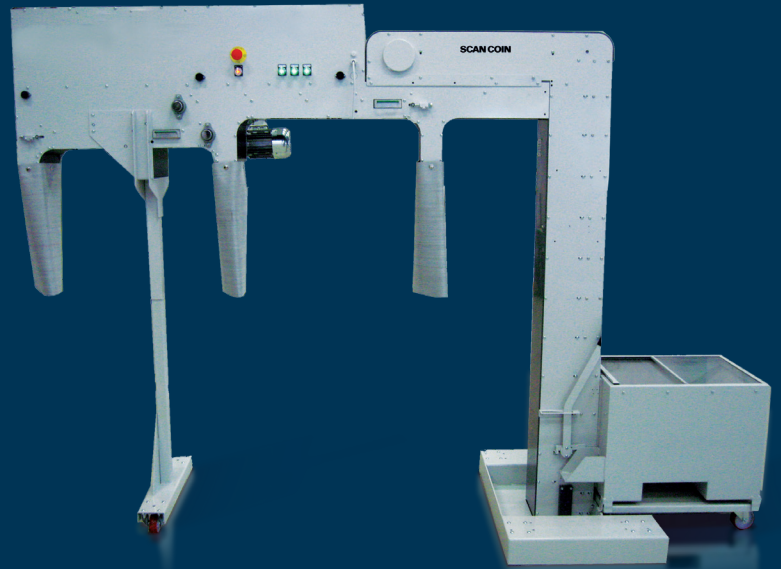


SCAN COIN Single Point Feeding System

Suitable for transporting coins



Single Point Feeding System for Improved Cash Management

The single point feeding system is used for transporting coins from one inlet to several optional outlets. Instead of manually distributing coins to several packaging units, the single point feeding system is an efficient and comfortable automated solution for smart cash management. Also, the small distance between the different outlets makes it possible to supply coins to wrapping machines, sachet machines or other cash solutions for complete coin processing.

Benefits

- Enhanced efficiency
- Improved security
- Robust design
- Easy operation and monitoring
- Saves floor space
- Ideal for large quantities of coins

Optional Outlets



Three or Four Outlets for Small to Medium Amount of Coins

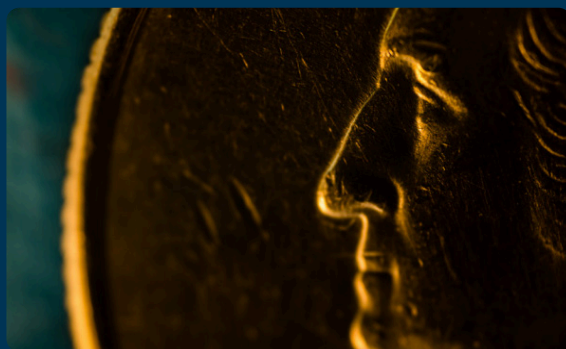
The feeding system is available with several outlets depending on your needs. We recommend three or four outlets for small or medium amount of coins.

Six Outlets for Large Amount of Coins

Our largest system with six outlets is mainly used for large amounts of coins and is normally connected to several coin counters, SC3003. These coin counters are standing in pairs on top of the high speed sachet machines, SC9100H. This type of single point feeding system is wider in its design and is fed by the largest bulk coin lift that we have to offer.

Strong Features for Coin Processing

- Built up on the strong SCAN COIN technology
- Start and stop by means of a level sensor
- Manual feeding and disconnection of the outlets is possible
- Small distance between outlets = 1,000 mm (39.37")
- Start and stop is handled automatically by means of level sensors or by purposely programming settings



Complete Coin Automation

SCAN COIN's broad portfolio of strong CCP cash management solutions make it possible to connect the feeding system to several coin machines. We have extensive experience of working with Mints and CIT's worldwide and

can help you determine the best solutions for your business needs. To the right is an example of a complete system where coins are going from a coin hopper, via a lift, into the feeding system and down into wrapping machines.

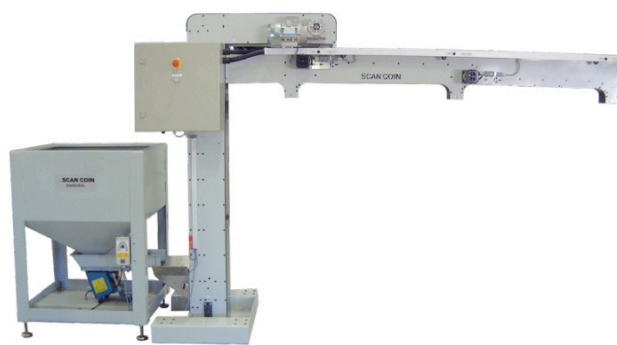
Configurable Coin Lifts

The performance of the single point feeding system can be enhanced further with the use of a free-standing coin lift. It feeds loose coins from a hopper or container into the single point feeding system. The outfeeding height is adjustable and depending on the chosen lift it can process up to 4,000 coins a minute. We have a wide range of coin lifts, from small ones, such as the 3365 and 3420, mainly used with

a container or a vibrating hopper (see further down), to the largest bulk coin lift, the 011- 201944-001. Smaller lifts are connected to a 3-point feeding system, together with wrappers, while the largest coin lift is suitable for the 6-point feeding system connected to the SC3003 coin counters. The lifts can be adapted and configurable after your needs.



3420



3365

There are several options of SCAN COIN lifts that support the single point feeding system. Below is an example of a station consisting of a smaller coin lift, 011-201928-000, feeding coins from the container into the hopper, while the larger coin lift, 011-201944-001, feeds coins into the single point feeding system.



Accessories and Options

In addition to the coin lift we strongly recommend including a vibrating hopper, coin wagon, container or coin cassettes to your system, all of which help store coins before they are transported by the lift into the feeding system.

Vibrating Hopper

Connect the feeding system to a vibrating hopper for continuous operation. It is normally used for feeding coin lifts and the single point feeding system for packaging lines. The hopper is capable of holding up to 60,000 coins.

Coin Container

The coin container SC 94220 is a stackable unit with a separate trolley (SC 94200). The container can be stacked by means of a fork lift to save floor space.

Coin Wagon

Solid wheels and a handle make the wagon easy to move. The transparent plastic plexiglass cover can be sealed to protect the coins. The wagon has noise reduction and is designed to be connected to the coin lift.

Coin Handling Cassettes

The uniquely designed cassettes, CHS-9, is a small and flexible solution with minimal footprint. It stores and transports coins for the small to medium business. Additionally, the trolley makes the movement of cassettes into an easy operation.



SC-95299



SC-9420



SC-3400



CHS-9

Scalable Solution for your Specific Needs

We offer a wide range of single point feeding systems. Request a customized solution for a specific packaging line



7200-104/204



011-007200-831